





**5000 m<sup>2</sup> -**  
Production area  
2 500 m<sup>2</sup> to grow



**116**  
Engineers and  
technicians



**8M €**  
Invoice value

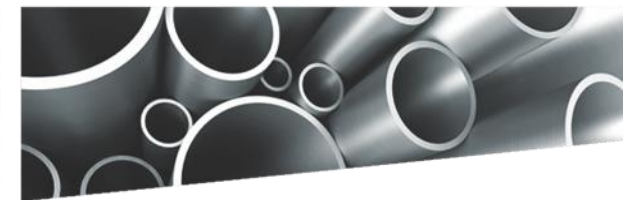


Rua Sol Poente, 22/26  
Apartado 7022  
Zona Industrial SAM  
4760-908 Ribeirão - V.N.Famalicão  
Portugal



# | FACILITIES

- 5 000 m<sup>2</sup> Production area – 2 500 m<sup>2</sup> grow area
- 7 cranes - 3,2 T to 10 T
- Heated
- Maximum energy efficiency- LED, Solar panels self consumption and batteries capacitors



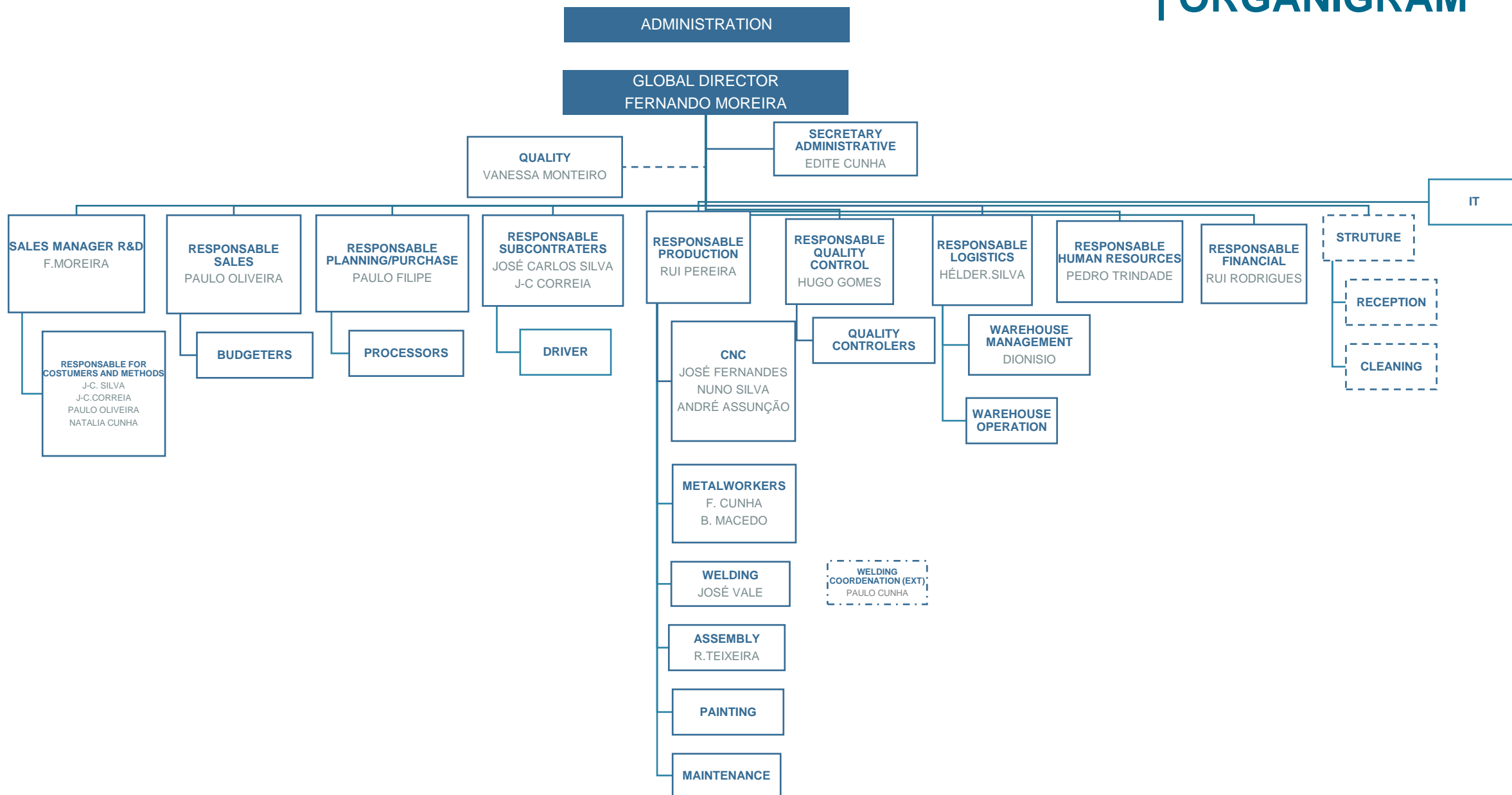
# 9

# 5

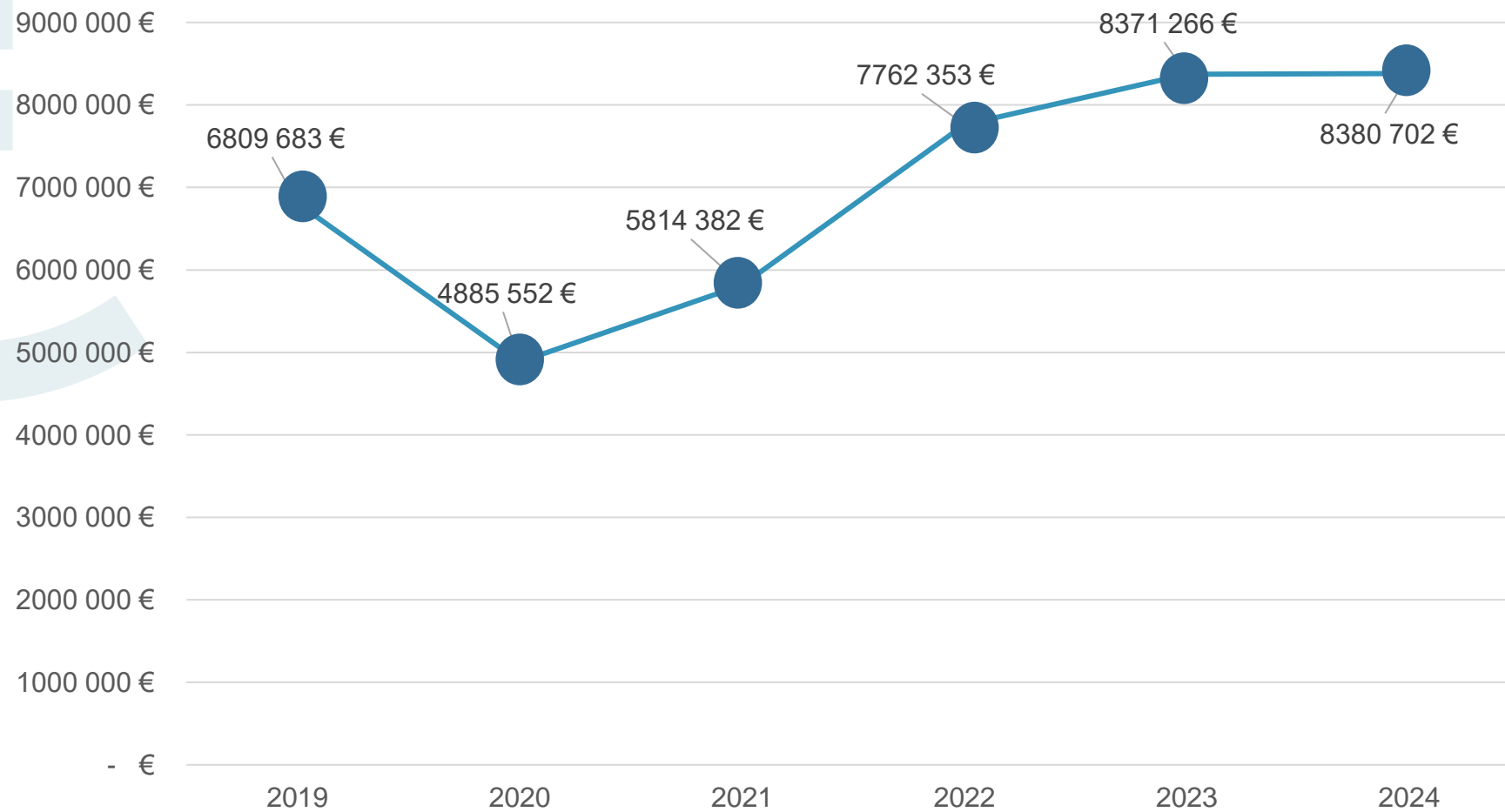
TSF began its activity in 1995. Currently, with 30 years of know-how and expertise, it exports about 96% of its production to main European markets. The manufacturing of these small series and high added value unique pieces is intended for sectors of activity with a high degree of demand, such as Nuclear, Aeronautical, Petrochemical, Pharmaceutical, Food and Perfumery / Cosmetic, Packaging and other Industries.

In 2024, TSF is acquired by the AMMG group. The AMMG Group aims to offer innovative and high-quality manufacturing solutions while contributing to sustainable and responsible reindustrialization in Europe.

# ORGANIGRAM



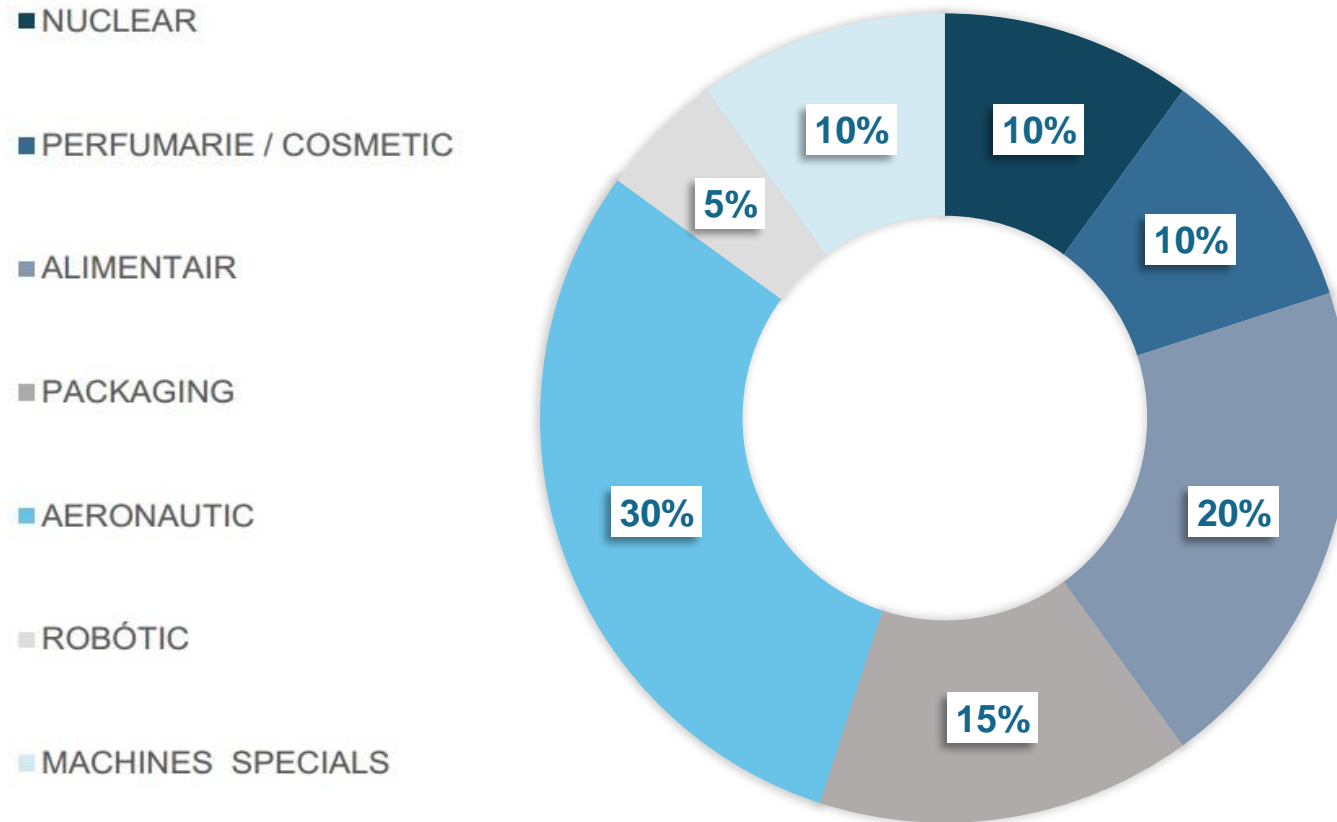
# | TURNOVER





# | WHERE WE OPERATE





## MILLING

With an increasing milling capacity, the production ranges from small parts to 8-meter parts in 5 axis.

TSF is prepared to meet all challenges brought by clients, both in terms of production capacity and deadlines.



# | CAPACITY MILLING

## | VERTICAL CENTERS MAZAK

**VTC-30C** | Axes: X=1660mm, Y=760mm  
and Z=660mm

**V414 2 Palets of 900X410mm** | Axes:  
X=760mm, Y=410mm and Z=460mm

**FJV 35/80 2 Palets of 1500X600mm** |  
Axes: X=2000mm, Y=800mm and  
Z=585mm

**FJV 60/120** Axes: X=3.200mm,  
Z=800mm and Y=1.400 avec 4+1 axes

**VCN-530C** | Axes: X= 1050 mm, Y= 530  
mm and Z= 510 mm

## | CENTERS CNC ZAYER

**KAIROS 8000** | Axes: X= 8.000mm,  
Y= 2.500mm and Z= 1.500mm, with 5  
axes

**XIOS 4000** | Axes: X=4.000mm,  
Y=1.600mm and Z=1.500mm, with 5 axes

**XIOS G 1500** | Axes: X=3.000 mm, Y=1.600  
mm and Z=1.600 mm, with 5 axes and  
turntable 1.500 x 1.500 mm

## | HORIZONTAL CENTERS MAZAK

**FH680x 2 Palets of 500mm** | Axes:  
X=1,050mm, Y=800mm and  
Z=825mm

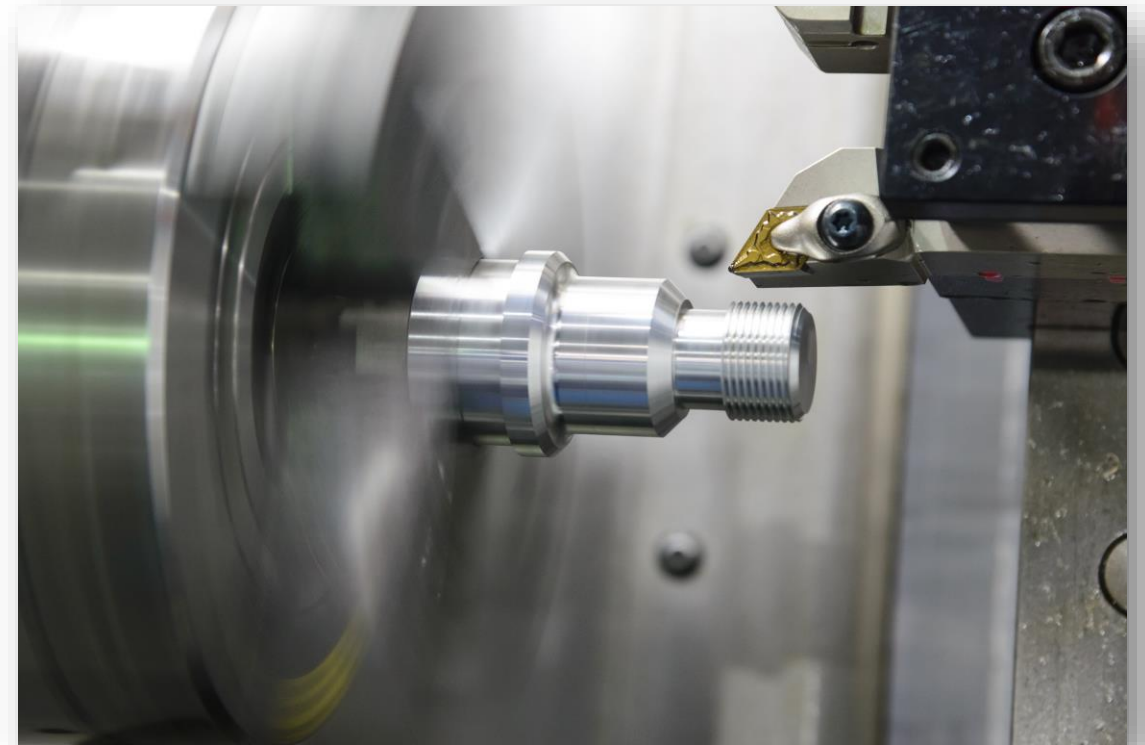
**FH580/40** | Axes: X=710mm,  
Y=610mm and Z=660mm

**FH480 2 Palets of 400mm** | Axes:  
X=560mm, Y=560mm and Z=510mm  
with 4 axes

**FH4800 2 Palets of 400mm** | Axes:  
X=560mm, Y=560mm and Z=510mm

## TURNING

As turning is concerned, TSF is equipped with the most modern CNC technology on the market, with a capacity of manufacturing small diameters up to 780 mm, with 5 continuous axis. TSF focuses on the execution of small and medium-sized high added value and technical series, with a young team already with extensive experience in CNC operations.



# | CAPACITY TURNING

## | LATHES CNC MAZAK

QT10 | X=Ø160mm and Z=250mm

QT20 | X=Ø350mm and Z=500mm

NEXUS 250 | X=Ø380mm and Z=1.000mm with 4 axes

MEGA TURN MAZAK (VERTICAL LATHE) | Ø1.400 mm

## | TURNING CENTERS MAZAK

4x INTEGREGX 400 | X=Ø780mm and Z=1.500mm with 5 axes

INTEGREGX e-410H | X=Ø600mm and Z=3.000mm with 5 axes

TSF has a significant know-how in technical welded constructions, whether in machines' chassis or in structures for special equipment. It is equipped with state-of-the-art technology, modular construction tables, with experienced and properly certified welders TIG, MIG, MAG Welding.

- Materials: Stainless steel, carbon steel, aluminum;
- Modelling Welding Tables for Prototypes.



# | WELDING EQUIPMENT

REHM	Sinergic.Pro	270-2	MIG-MAG
REHM	Sinergic.Pro	350-4	MIG-MAG
REHM	Sinergic.Pro2	450-4	MIG-MAG
REHM	Sinergic.Pro2	450-4	MIG-MAG
REHM	Sinergic. Mega Plus 400	400	MIG-MAG
REHM	Mega.Plus Focus 500	500	MIG-MAG
REHM	Invertig.Pro	280 AC/DC	TIG
REHM	Invertig.Pro	280 AC/DC	TIG
YASKAWA FELBUS 5	Robot		300 A
PEMA	Welding positioner	APSi 3500	3500 Kg

## | MACHINES 3D

ABERLINK | X= 640mm, Y= 900mm, Z= 500mm

DEA GAMMA 2205 | X= 1.000mm, Y= 2.600mm, Z= 1.000 mm

DEA GLOBAL ADVANCE | X= 1.500mm, Y= 3.300mm, Z= 1.400mm

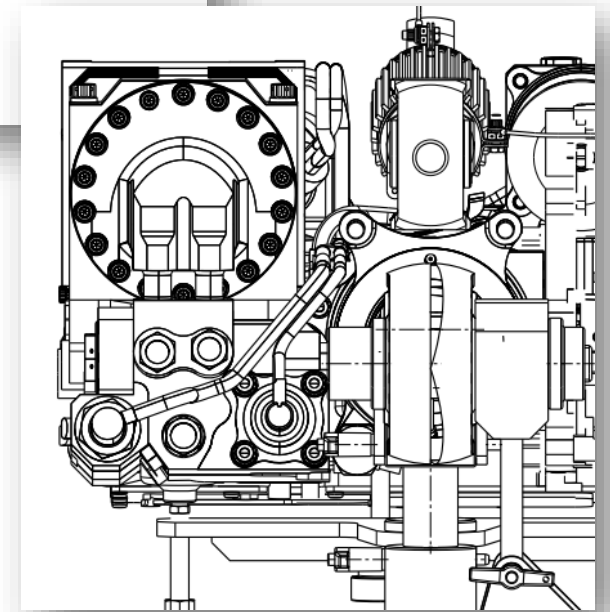
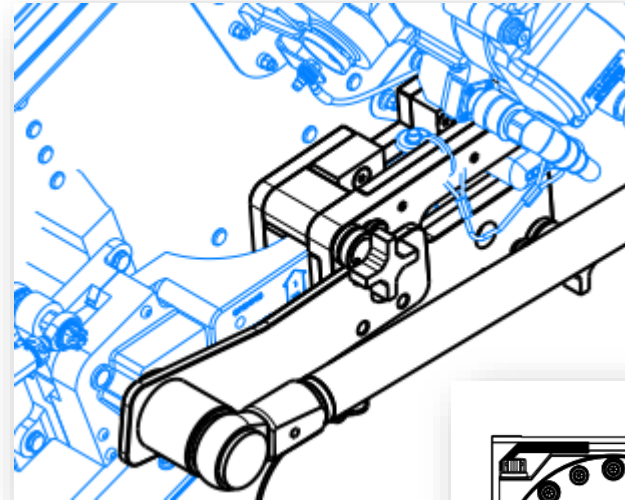
## | COLUMNS 2D

TESA 2D with 600mm

TESA 2D with 900mm



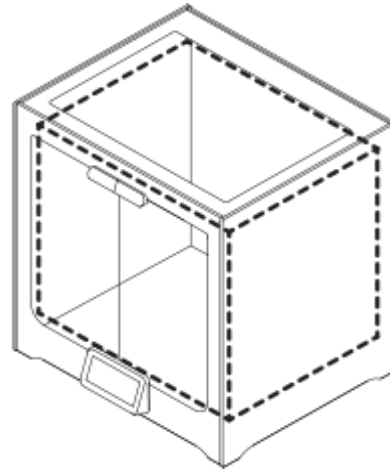
TSF is also prepared to assemble and test equipment, delivering to clients, as much as possible, the closest to a finished product. Its intention is to add value to high quality products, ensuring its customers delivery times and competitive market prices.



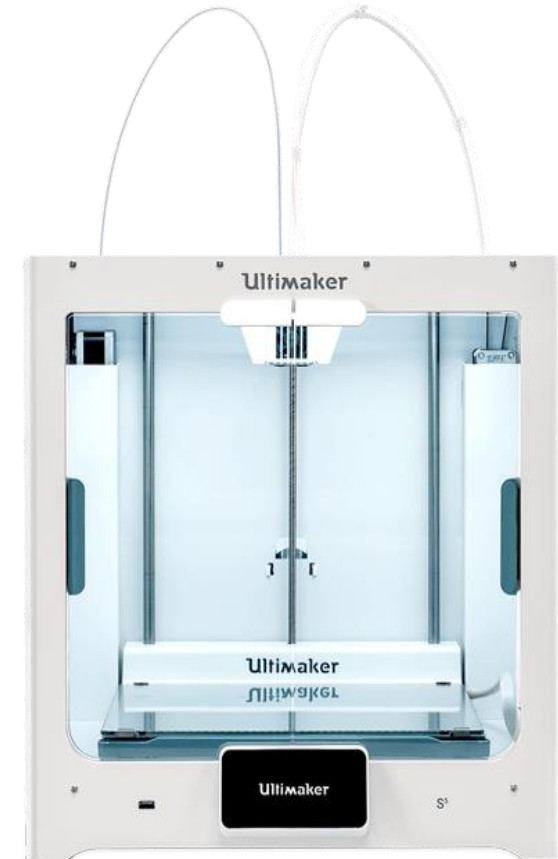
## 3D PRINTER ULTIMAKER S5

Left or right nozzle, or dual extrusion:

**330 x 240 x 300 mm**  
(13 x 9.4 x 11.8 inches)



Easy-to-use desktop 3D printer with a large build volume that delivers accurate, industrial-grade parts, time and again. With simple setup, high uptime, and reliable dual extrusion, Ultimaker S5 is the complete professional 3D printing solution



# | PAINTING AND PICKLING



## | PAINT BOOTH

8.000x3.000x4.000 mm



## | PICKLING

8.000x3.000x4.000 mm

## | External/Internal Services

Anodizing

Color anodization

Ultra sounds

Nondestructive test

Industrial radiography

Induced currents

Digital radiography

Phaser arrays

RPA

Leak test

Hardening

Hardening by induction

Carburizing and carbonitriding

Sub-zero

Stress relieving

Soft annealing

Precipitation hardening

PVD

Oxidation

# OUR REFERENCES



# OUR REFERENCES




# | CERTIFICATION



**METAL  
PORTUGAL**<sup>®</sup>  
SHAPING THE FUTURE





Rua Sol Poente, 22/26  
Apartado 7022  
Zona Industrial SAM  
4760-908 Ribeirão - V.N.Famalicão  
Portugal

**T** +351 252411844

**F** +351 252411592

**E** [geral@tsf-trofa.com](mailto:geral@tsf-trofa.com)

**W** [www.tsf-trofa.com](http://www.tsf-trofa.com)